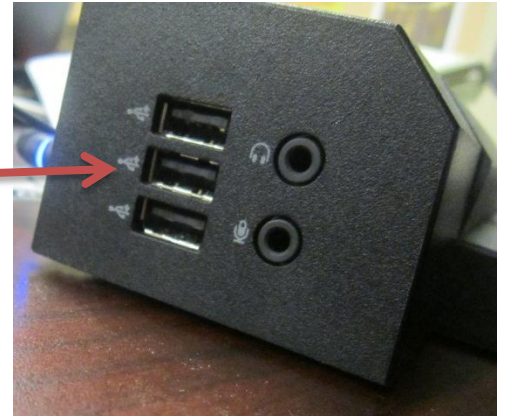


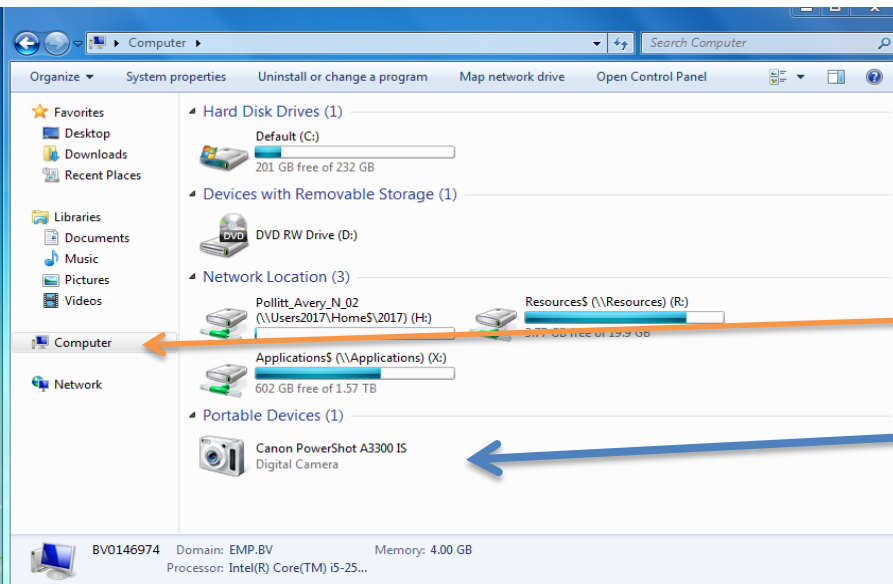
Camera Uploading Help Document

How to access your pictures.

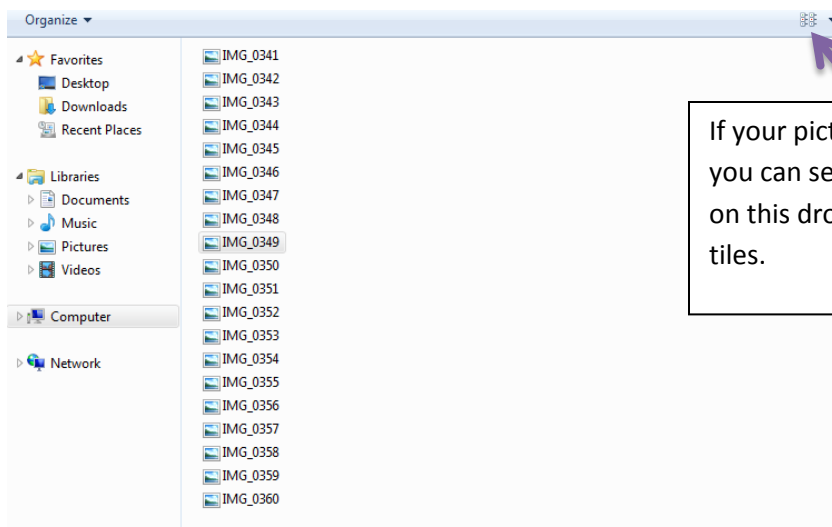
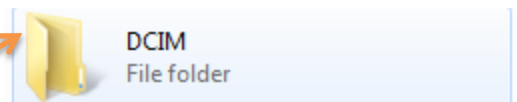
First you will plug in USB cord into this slot in your computer.



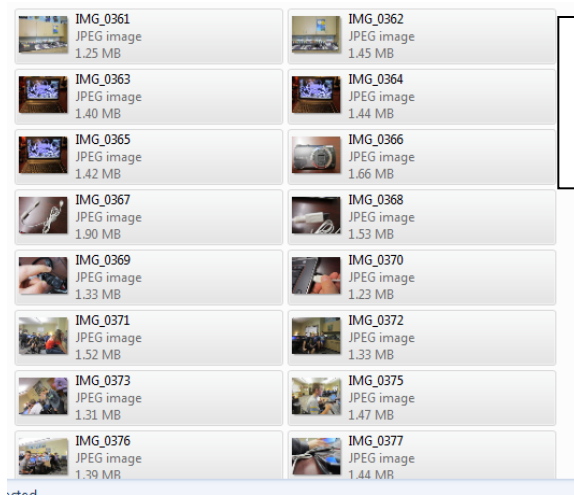
First click the computer icon on the left side. Then click on the icon that says your camera name.



Then you will click on the folder that pops up. In this case I would click this one.



If your picture list shows up as this you can see the pictures by clicking on this dropdown arrow then clicking tiles.



You can always copy and paste the pictures anywhere by highlighting them and left clicking.

To keep your pictures in a folder and on your computer you will highlight your pictures the left click and copy them. Then you will click the documents icon. Then make a new folder or paste them in an existing folder.

